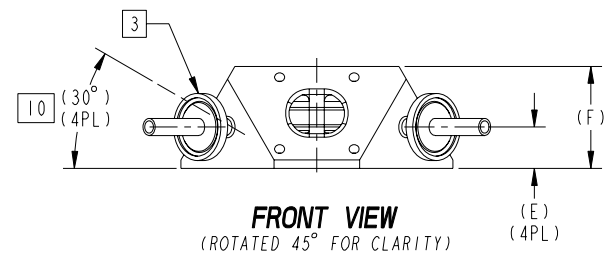
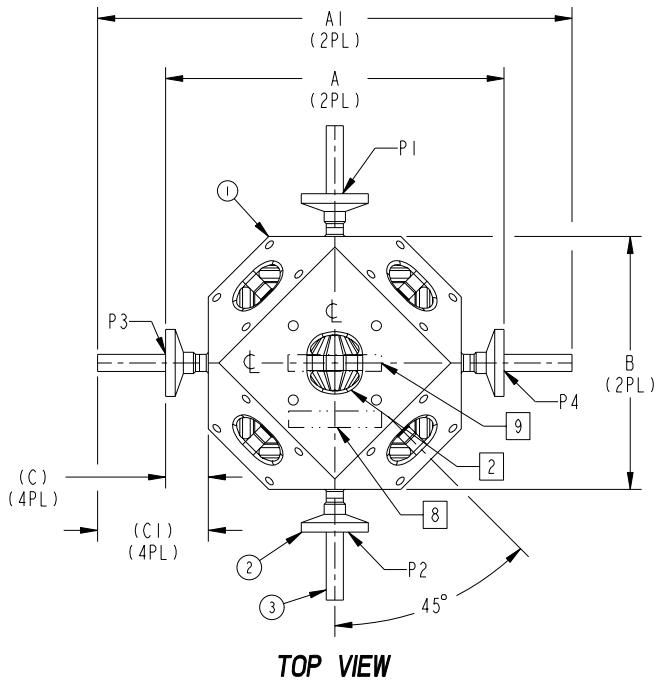


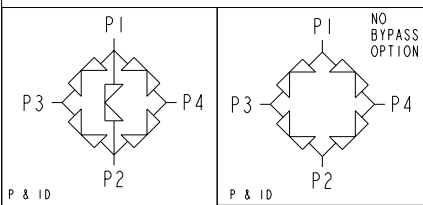
VALVE SIZE (SEE NOTE 1)	DIMENSIONS NOTE: ALL DIMENSIONS IN BRACKETS [] ARE MILLIMETERS								
	A	A1	B	C	C1	E	F	WT 316L LBS (KG) (SEE NOTE 4)	ITT. REF # CHRO/CHD
1/4"	4.98 [126,5]	2.56 [64,9]	0.00 [0,0]	0.63 [16,0]	1.27 [32,3]	0.61 [15,5]	1.50 [38,1]	3.8 (1.72)	M10048/ M10736
3/8"	4.98 [126,5]	6.98 [177,3]	4.00 [101,6]	0.63 [16,0]	1.63 [41,4]	0.61 [15,5]	1.50 [38,1]	3.7 (1.65)	M10735/ M10737
1/2" BT	4.98 [126,5]	6.98 [177,3]	4.00 [101,6]	0.63 [16,0]	1.63 [41,4]	0.70 [17,9]	1.50 [38,1]	3.9 (1.70)	M10727/ M10738
1/2" PF	6.21 [157,7]	8.21 [208,5]	5.00 [127,0]	0.63 [16,0]	1.63 [41,4]	0.83 [21,0]	2.00 [50,8]	7.9 (3.59)	M10124/ M10122
3/4"	6.77 [172,1]	8.77 [222,9]	5.90 [149,8]	0.63 [15,9]	1.63 [41,3]	1.02 [25,9]	2.42 [61,5]	11.9 (5.39)	M10126/ M10121
1"	9.25 [235,0]	10.00 [254,1]	6.98 [177,2]	1.26 [31,9]	1.63 [41,4]	1.05 [26,6]	2.63 [66,9]	18.9 (8.57)	M10119/ M10110
1-1/2"	11.51 [292,4]	12.26 [311,4]	9.66 [245,3]	1.26 [31,9]	1.63 [41,4]	1.45 [36,8]	3.59 [91,3]	44.6 (20.23)	M10120/ M10123
2"	13.71 [348,1]	14.96 [379,9]	12.07 [306,6]	1.26 [31,9]	1.88 [47,8]	1.93 [49,0]	4.46 [113,3]	85.8 (38.90)	M10390/ M10739

LIST OF MAJOR COMPONENTS			
ITEM	DESCRIPTION	MATERIAL	QTY
1	CHROMATOGRAPHY VALVE BODY		1
2	SANITARY CLAMP FTG. (AS APPLICABLE)		4
3	TUBE		A/R

OPTIONAL MOUNTING HOLES			
VALVE SIZE	G	DRILL x DEPTH	THREAD x DEPTH
1/4" BT	1.500 [38,10]	0.201 x 0.438 [5,11 x 11,13]	1/4-20 UNC x 0.375
3/8" BT	1.500 [38,10]	0.201 x 0.438 [5,11 x 11,13]	1/4-20 UNC x 0.375
1/2" BT	1.500 [38,10]	0.201 x 0.438 [5,11 x 11,13]	1/4-20 UNC x 0.375
1/2" PF	2.000 [50,80]	0.201 x 0.438 [5,11 x 11,13]	1/4-20 UNC x 0.375
3/4"	2.500 [63,50]	0.257 x 0.562 [6,53 x 14,29]	5/16-18 UNC x 0.500
1"	3.000 [76,20]	0.257 x 0.562 [6,53 x 14,29]	5/16-18 UNC x 0.500
1-1/2"	4.000 [101,60]	0.312 x 0.625 [7,92 x 15,88]	3/8-16 UNC x 0.562
2"	5.000 [127,00]	0.312 x 0.625 [7,92 x 15,88]	3/8-16 UNC x 0.562



- NOTES:
- 1/4"-1/2"BT ARE BIO-TEK SIZES.
 - CENTER VALVE IS REMOVED FOR 'NO BYPASS' OPTION.
 - VALVE IS SHOWN WITH SANITARY CLAMP FITTINGS SUPERIMPOSED ON TUBE ENDS.
 - WEIGHT IS FOR THE BODY WITHOUT THE "BYPASS" VALVE IN 316L MATERIAL. BODY WEIGHT WILL BE APPROXIMATELY 10% LESS WHEN THE "BYPASS" VALVE IS INCLUDED. WEIGHT CALCULATED BASE ON THEORETICAL VALUES. ACTUAL WEIGHT MAY VARY.
 - PROTECTED BY THE FOLLOWING PATENTS: 5,906,223 & 6,112,767
 - CAN BE MOUNTED HORIZONTALLY OR VERTICALLY WITH P1 OR P2 ON TOP.
 - ITT MARKING LOCATION WHEN BYPASS IS PRESENT FOR SIZES: BT-3/4"
 - ITT MARKING LOCATION WHEN BYPASS IS PRESENT FOR SIZES 1", 1-1/2", 2"
 - ITT MARKING LOCATION WHEN BYPASS VALVE IS NOT PRESENT, ALL SIZES.
 - BONNET MOUNTING ANGLE.



PURE-FLO ORDER: _____	ITEM: _____	THIRD ANGLE PROJECTION	UNLESS OTHERWISE NOTED	DATE	BY	CHROMATOGRAPHY VALVE ASSY. TABULATED 1/4"-2"	 Pure-Flo www.ittpureflo.com
CUSTOMER: _____	CUSTOMER PO: _____		INCH X: ± 0.06 Y: ± 0.06 Z: ± 0.005 X/Y: ± 0.016 X: ± 1.5 Y: ± 1.5 Z: ± 0.5	DWN 06/22/04	RW		
OTHER INFO: -	ISSUED BY: _____	UNLESS OTHERWISE SPECIFIED, ALL DIMENSIONS ARE IN INCH		CHCKD 06/22/04	PS		
	CERTIFIED BY: _____			APVD 12/19/07	PS	WT: SEE ABOVE ECN#	CHR/BYP/TAB