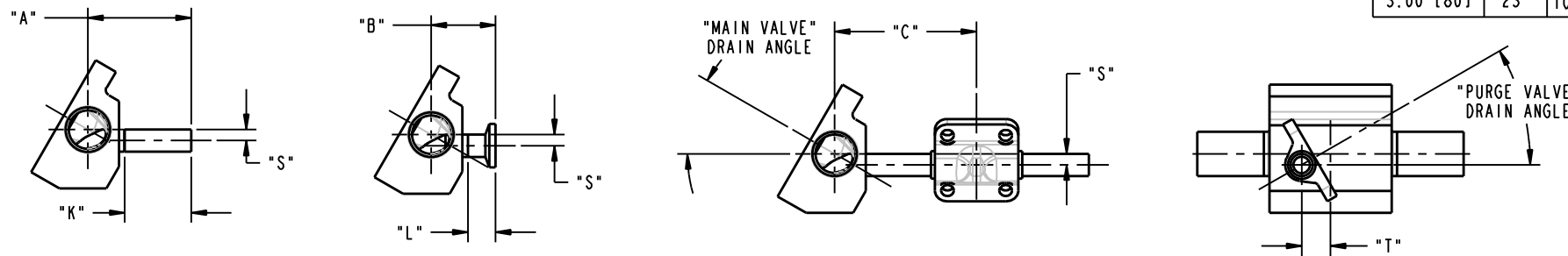


		MAIN VALVE HORIZONTAL STERILE ACCESS																
		BIO-PURE BIO-TEK	0.50 [15]	0.75 [20]	1.00 [25]	1.50 [40]	2.00 [50]	2.50 [65]	3.00 [80]									
		CODES	CODES	CODES	CODES	CODES	CODES	CODES	CODES	CODES	CODES	CODES						
P U R G E	0.25 [6] 0.375 [10] 0.50 [15]	A B	1.96 [49,8] 1.58 [40,1]	2.09 [53,1] 1.09 [27,7]	2.21 [56,1] 1.21 [30,7]	2.33 [59,2] 1.33 [33,8]	2.57 [65,3] 1.57 [39,9]	2.87 [72,9] 1.87 [47,5]	3.31 [84,1] 2.31 [58,7]	3.55 [90,2] 2.55 [64,8]								
	BIO-PURE BIO-TEK 0.25 [6] 0.375 [10] 0.50 [15]	C C C	2.50 [63,5] 2.50 [63,5] 2.50 [63,5]	ad ad d	2.50 [63,5] 2.50 [63,5] 2.50 [63,5]	ad ad d	2.50 [63,5] 2.50 [63,5] 2.50 [63,5]	a a d	2.75 [69,9] 2.75 [69,9] 2.75 [69,9]	ad ad d	2.75 [69,9] 2.75 [69,9] 2.75 [69,9]	a a d	3.25 [82,6] 3.25 [82,6] 3.25 [82,6]	ad ad d	4.41 [112,0] 4.41 [112,0] 4.41 [112,0]	ad ad d	4.41 [112,0] 4.41 [112,0] 4.41 [112,0]	ad ad d
	0.50 [15]	A B C		2.09 [53,1] 1.09 [27,7] 2.75 [69,9]	2.21 [56,1] 1.21 [30,7] 2.75 [69,9]	2.33 [59,2] 1.33 [33,8] 3.20 [81,3]	2.57 [65,3] 1.57 [39,9] 3.30 [83,8]	2.87 [72,9] 1.87 [47,5] 3.50 [88,9]	3.31 [84,1] 2.31 [58,7] 4.66 [118,4]	3.55 [90,2] 2.55 [64,8] 4.66 [118,4]								
	0.75 [20]	A B C			2.21 [56,1] 1.21 [30,7] 3.00 [76,2]	2.33 [59,2] 1.33 [33,8] 3.60 [91,4]	2.57 [65,3] 1.57 [39,9] 3.75 [95,3]	2.87 [72,9] 1.87 [47,5] 4.00 [101,6]	3.31 [84,1] 2.31 [58,7] 5.43 [137,9]	3.55 [90,2] 2.55 [64,8] 5.43 [137,9]								
	1.00 [25]	A B C				2.33 [59,2] 1.95 [49,5] 3.60 [91,4]	2.57 [65,3] 2.19 [55,6] 3.75 [95,3]	2.87 [72,9] 2.49 [63,2] 4.00 [101,6]	3.31 [84,1] 2.93 [74,4] 5.43 [137,9]	3.55 [90,2] 3.17 [80,5] 5.43 [137,9]								
	1.50 [40]	A B C					2.57 [65,3] 2.19 [55,6] 4.50 [114,3]	2.87 [72,9] 2.49 [63,2] 4.78 [121,4]	3.31 [84,1] 2.93 [74,4] 5.82 [147,8]	3.55 [90,2] 3.17 [80,5] 5.82 [147,8]								
	2.00 [50]	A B C						3.12 [79,2] 2.49 [63,2] 4.78 [121,4]	3.56 [90,4] 2.93 [74,4] 5.82 [147,8]	3.80 [96,5] 3.17 [80,5] 5.82 [147,8]								
	2.50 [65]	A B C							3.56 [90,4] 2.93 [74,4] 9.75 [247,7]	3.80 [96,5] 3.17 [80,5] 9.75 [247,7]								
	3.00 [80]	A B C								3.80 [96,5] 3.17 [80,5] 9.75 [247,7]								

		MAIN VALVE HORIZONTAL STERILE ACCESS OFFSETS									
		BIO-PURE BIO-TEK	0.50 [15]	0.75 [20]	1.00 [25]	1.50 [40]	2.00 [50]	2.50 [65]	3.00 [80]		
P U R G E	0.250 [6]	S T	0.09 [2,3] 0.27 [6,9]	0.09 [2,3] 0.34 [8,6]	0.22 [5,6] 0.45 [11,4]	0.35 [8,9] 0.55 [14,0]	0.60 [15,2] 0.85 [21,6]	0.85 [21,6] 0.85 [21,6]	1.10 [27,9] 1.40 [35,6]	1.35 [34,3] 1.50 [38,1]	
	0.375 [10]	S T	0.03 [0,8] 0.27 [6,9]	0.03 [0,8] 0.33 [8,4]	0.16 [4,1] 0.48 [12,2]	0.28 [7,1] 0.65 [16,5]	0.53 [13,5] 0.85 [21,6]	0.78 [19,8] 0.85 [21,6]	1.03 [26,2] 1.40 [35,6]	1.28 [32,5] 1.50 [38,1]	
	0.50 [15]	S T	0.00 [0,0] 0.31 [7,9]	0.00 [0,0] 0.35 [8,9]	0.12 [3,0] 0.45 [11,4]	0.25 [6,4] 0.65 [16,5]	0.50 [12,7] 0.75 [19,1]	0.75 [19,1] 0.95 [24,1]	1.00 [25,4] 1.40 [35,6]	1.25 [31,8] 1.50 [38,1]	
	0.75 [20]	S T			0.00 [0,0] 0.62 [15,7]	0.13 [3,3] 0.62 [15,7]	0.38 [9,7] 0.75 [19,1]	0.63 [16,0] 1.00 [25,4]	0.88 [22,4] 1.40 [35,6]	1.13 [28,7] 1.50 [38,1]	
	1.00 [25]	S T				0.00 [0,0] 0.62 [15,7]	0.25 [6,4] 0.75 [19,1]	0.50 [12,7] 1.00 [25,4]	0.75 [19,1] 1.40 [35,6]	1.00 [25,4] 1.60 [40,6]	
	1.50 [40]	S T					0.00 [0,0] 0.91 [23,1]	0.25 [6,4] 1.10 [27,9]	0.50 [12,7] 1.40 [35,6]	0.75 [19,1] 1.60 [40,6]	
	2.00 [50]	S T						0.00 [0,0] 1.16 [29,5]	0.25 [6,4] 1.60 [40,6]	0.50 [12,7] 1.70 [43,2]	
	2.50 [65]	S T							0.00 [0,0] 1.60 [40,6]	0.25 [6,4] 1.85 [47,0]	
	3.00 [80]	S T								0.00 [0,0] 1.85 [47,0]	

VALVE/PURGE SIZE/TUBE	MAIN VALVE						PURGE VALVE DRAIN ANGLE	PURGE TUBE	
	DRAIN ANGLE	E BW LENGTH	F TC LENGTH	G TC X BW LENGTH	H	J		K	L
BIO-PURE BIO-TEK	30°	4.72 [119,9]	2.50 [63,5]	3.61 [91,7]	0.39 [9,9]	1.50 [38,1]	30°	1.50 [38,1]	0.50 [12,7] 1.12 [28,4] SEE CODE e
0.50 [15]	30°	5.13 [130,3]	3.50 [88,9]	4.32 [109,7]	0.69 [17,4]	1.50 [38,1]	30°	1.50 [38,1]	0.50 [12,7]
0.75 [20]	30°	5.57 [141,5]	4.00 [101,6]	4.79 [121,7]	0.72 [18,2]	1.50 [38,1]	30°	1.50 [38,1]	0.50 [12,7]
1.00 [25]	30°	6.00 [152,4]	4.50 [114,3]	5.25 [133,4]	0.75 [19,1]	1.50 [38,1]	30°	1.50 [38,1]	1.12 [28,4]
1.50 [40]	28°	6.94 [176,3]	5.50 [139,7]	6.22 [158,0]	0.78 [19,8]	1.50 [38,1]	28°	1.50 [38,1]	1.12 [28,4]
2.00 [50]	23°	8.26 [209,8]	6.25 [158,8]	7.26 [184,4]	0.75 [18,9]	1.75 [44,4]	23°	1.75 [44,4]	1.12 [28,4]
2.50 [65]	28°	10.98 [278,9]	8.75 [222,3]	9.87 [250,7]	0.64 [16,3]	1.75 [44,4]	28°	1.75 [44,4]	1.12 [28,4]
3.00 [80]	23°	10.98 [278,9]	8.75 [222,3]	9.87 [250,7]	0.64 [16,3]	1.75 [44,4]	23°	1.75 [44,4]	1.12 [28,4]



CODES:
a- NON-CONFORMANCE TO "6D" RULE.
c- FOR 0.50 PURGE VALVE WITH A208 ACTUATOR, ROTATE AIR CONNECTION 90° TO PURGE FLOW DIRECTION.
d- PURGE TUBE REQUIRED.
e- FOR BIO-PURE AND BIO-TEK MAIN VALVE, L=1.12 [28,4].

NOTES:
1. THESE STANDARDS ARE SUITABLE FOR HANDWHEEL AND ADVANTAGE TOPWORKS ONLY. US O.D. TUBE AND TRI-CLAMP ONLY.

