



# ITT

Pure-Flo®

## Zero Static Inverted with Drain (ZID)

Zerostatic Inverted Drain valves integrate the benefits of a zero static for low point feed or return lines while allowing for cleaning, sterilization or and/or draining of the connected process piping.

### Typical Applications:

- For line feed applications that require the ability to drain the up stream line

### Specifications

#### Standard Sizes:

- 0.5" - 4" (DN 15 - 100) Run, Main and Drain size
- Other sizes available upon request

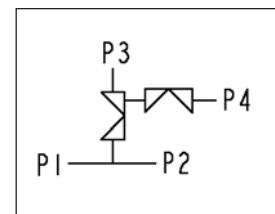
#### Materials:

- 316L ASTM - A479
- DN 177440, 1.4435
- AL6XN
- Hastelloy C-22 & C-276
- Other materials available upon request

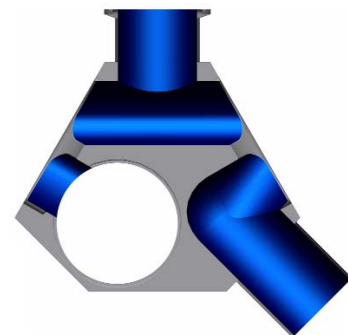
#### Standard End Connections:

- 14, 16, 18, 20 Gauge OD tubing
- DIN/ISO
- Tri-Clover Tri-Clamp®
- Others available upon request

Compatible with standard Pure-Flo topworks: See PFTOP for details on available manual bonnets or actuator.



### Flow Path



*Engineered for life*



# ITT

Pure-Flo®

## How to Order a Zero Static Inverted with Drain

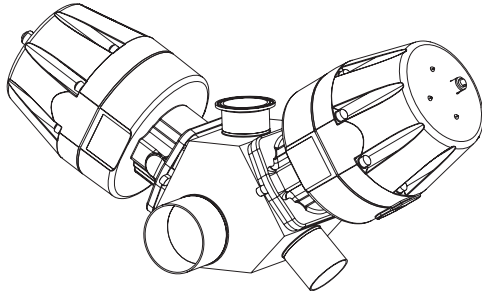
1" Inverted Zero Static with Drain, 2" Zero Static tube size, wrought stainless steel body, Tri-Clamp ends, .5" Bio-Tek Second Valve with Tri-Clamp outlet connection on right side of valve, 25 Ra interior finish, standard exterior finish (Scotch Brite).

**Figure Number:** ZID-1-419-2-419-.5-SVBT-419-R-W-6-1-0

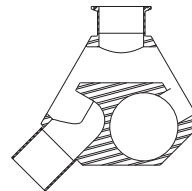
Configuration Example		ZID	1		419	2	419	.5	SVBT	419	R	W	6-1-0
Valve Body	Block Type	ZID	1		419	2	419	.5	SVBT	419	R	W	6-1-0
	Main Valve Size		1		419	2	419	.5	SVBT	419	R	W	6-1-0
	Main Valve Type (.5" only) <sup>1</sup>				419	2	419	.5	SVBT	419	R	W	6-1-0
	Main Valve End Connection				419	2	419	.5	SVBT	419	R	W	6-1-0
	Zerostatic Tube Size					2	419	.5	SVBT	419	R	W	6-1-0
	Zerostatic Tube End Connections						419	.5	SVBT	419	R	W	6-1-0
	Second Valve Size							.5	SVBT	419	R	W	6-1-0
	Second Valve Type (.5" only) <sup>1</sup>								SVBT	419	R	W	6-1-0
	Second Valve End Connection									419	R	W	6-1-0
	Second Valve Outlet Orientation (optional)										R	W	6-1-0
	Body Material											W	6-1-0
	Polish Selections												6-1-0

<sup>1</sup> For .5 inch valve, must specify Pure-Flo (PF) or Bio-Tek (BT).

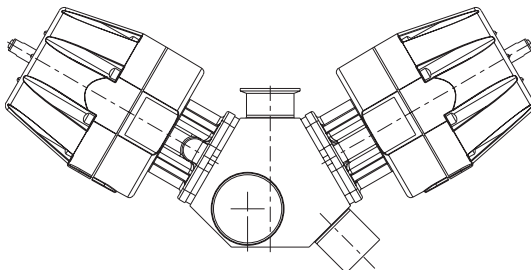
To add topworks, see BBTOP-07. For additional figure numbers, see PFORD.



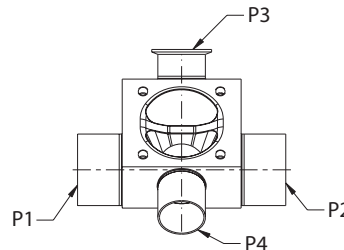
ISOMETRIC VIEW



SECTION A-A



FRONT VIEW



SIDE VIEW

Please contact Pure-Flo CA at 805-520-7200 for the latest drawing and dimensional information. The above drawing should only be used as a general reference.

© 2007 ITT Corporation  
Industrial Process

ZID-07

ITT Pure-Flo  
33 Centerville Road  
Lancaster, PA 17603  
(717) 509-2200  
www.ittpureflo.com