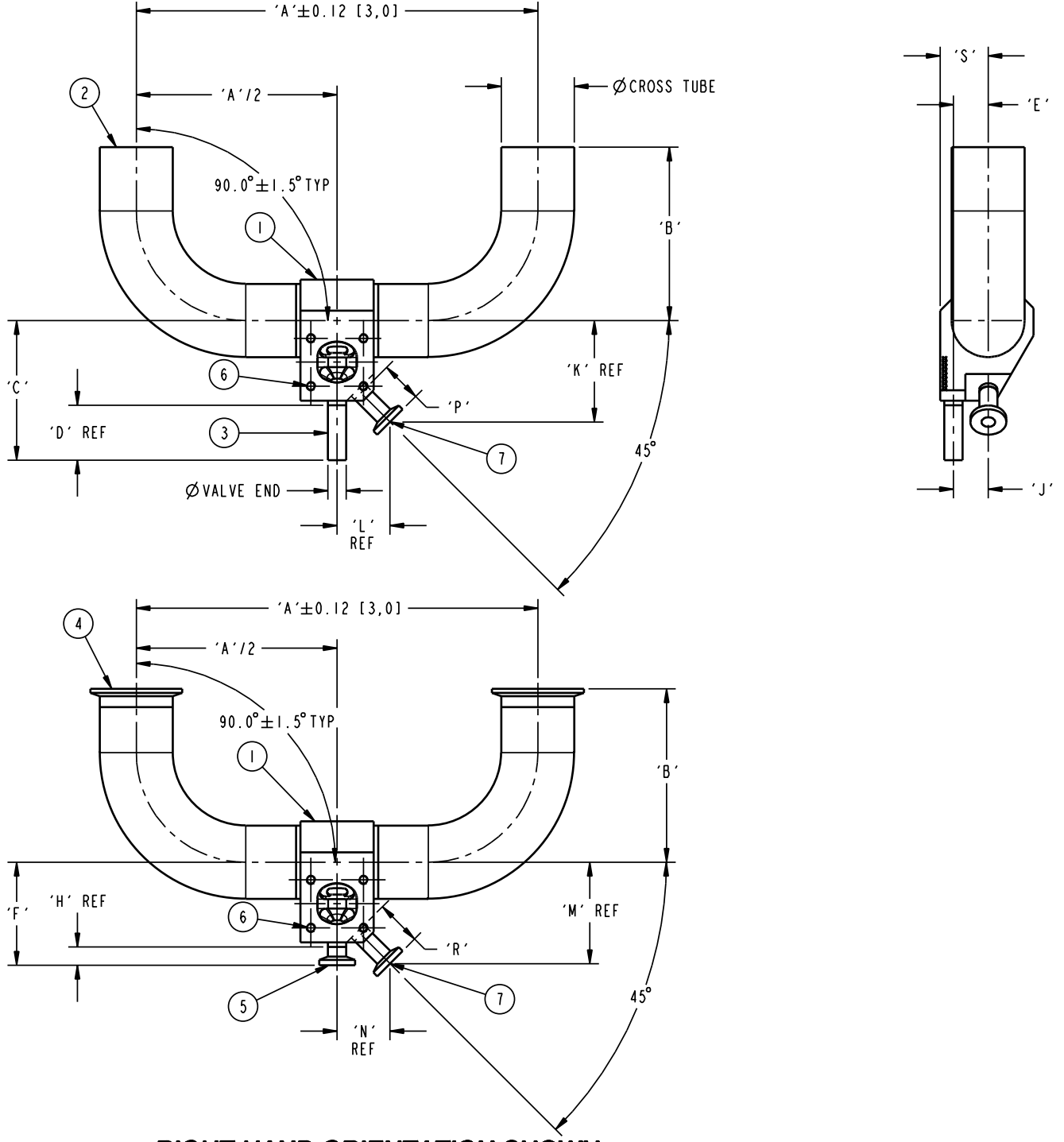


VALVE END	DIM'S	CROSS TUBE						
		1.00 [25,4]	1.50 [38,1]	2.00 [50,8]	2.50 [63,5]	3.00 [76,2]	4.00 [101,6]	
0.50 [12,7]	'A'	8.25 [209,6]	9.75 [247,7]	11.75 [298,5]	13.25 [336,6]	14.75 [374,7]	18.25 [463,6]	
	'B'	3.00 [76,2]	3.75 [95,2]	4.75 [120,6]	5.50 [139,7]	6.25 [158,8]	8.00 [203,2]	
	'C'	3.29 [83,6]	3.56 [90,4]	3.82 [97,0]	4.08 [103,6]	4.34 [110,2]	4.85 [123,2]	
	'D'	1.50 [38,1]	1.50 [38,1]	1.50 [38,1]	1.50 [38,1]	1.50 [38,1]	1.50 [38,1]	
	'E'	0.56 [14,2]	0.78 [19,8]	0.95 [24,1]	1.10 [27,9]	1.26 [32,0]	1.75 [44,4]	
	'F'	2.29 [58,2]	2.56 [65,0]	2.82 [71,6]	3.08 [78,2]	3.34 [84,8]	3.85 [97,8]	
	'H'	0.50 [12,7]	0.50 [12,7]	0.50 [12,7]	0.50 [12,7]	0.50 [12,7]	0.50 [12,7]	
	'J'	0.52 [13,2]	0.63 [16,0]	0.96 [24,4]	1.27 [32,3]	1.51 [38,4]	2.38 [60,5]	
	'K'	2.26 [57,4]	2.53 [64,2]	2.78 [70,6]	3.03 [77,0]	3.28 [83,3]	3.77 [95,8]	
	'L'	1.43 [36,3]	1.44 [36,6]	1.45 [36,8]	1.46 [37,1]	1.46 [37,1]	1.49 [37,8]	
	'M'	2.71 [68,8]	2.97 [75,4]	2.78 [70,6]	3.03 [77,0]	3.28 [83,3]	3.77 [95,8]	
	'N'	1.88 [47,8]	1.88 [47,8]	1.45 [36,8]	1.46 [37,1]	1.46 [37,1]	1.49 [37,8]	
	'P'	1.25 [31,8]	1.25 [31,8]	1.25 [31,8]	1.25 [31,8]	1.25 [31,8]	1.25 [31,8]	
	'R'	1.88 [47,8]	1.88 [47,8]	1.25 [31,8]	1.25 [31,8]	1.25 [31,8]	1.25 [31,8]	
	'S'	0.93 [23,6]	1.14 [29,0]	1.32 [33,5]	1.46 [37,1]	1.63 [41,4]	2.12 [53,8]	

LIST OF MAJOR COMPONENTS			
ITEM	DESCRIPTION	MATERIAL	QTY
1	BODY - ZSBBS	STN STL 316L	1
2	TUBING-ELBOW 90° CROSS TUBE END	STN STL 316L	AR
3	TUBING-VALVE END 16G	STN STL 316L	1
4	FERRULE-CROSS TUBE END TC	STN STL 316L	AR
5	FERRULE-VALVE END TC	STN STL 316L	1
6	STUD		4
7	FERRULE-SAMPLE PORT END TC 00.50 x 01.12	STN STL 316L	1
	FERRULE-REDUCING SAMPLE PORT END TC 00.50 x 01.12	STN STL 316L	1
	FERRULE-SAMPLE PORT END TC 00.50 x 01.75	STN STL 316L	1
	FERRULE-REDUCING SAMPLE PORT END TC 00.50 x 01.75	STN STL 316L	1

NOTES:
 1. SAMPLE PORT END TC FERRULE 00.50 x 01.75 & SAMPLE PORT END REDUCING FERRULE 00.50 x 01.75 ARE ONLY USED WITH VALVE END TC FERRULE ON 00.50 x 01.00 & 00.50 x 01.50 BODIES.
 2. LEFT HAND AND RIGHT HAND ORIENTATION IS DETERMINED BY VIEWING THE MACHINE FACE OF THE MAIN VALVE.



RIGHT HAND ORIENTATION SHOWN
 SEE NOTE 2

	PURE-FLO ORDER: _____ ITEM: -	THIS DOCUMENT IS THE SOLE PROPERTY OF ITT CORPORATION, OR ITS SUBSIDIARY, AND IS PROVIDED SUBJECT TO RETURN. IT IS ISSUED IN STRICT CONFIDENCE AND SHALL NOT BE REPRODUCED, OR COPIED, OR DISCLOSED IN WHOLE OR IN PART, OR USED AS THE BASIS FOR THE MANUFACTURE OR SALES OF APPARATUS OR PARTS TO WHICH THE DOCUMENT RELATES, WITHOUT THE EXPRESS WRITTEN CONSENT OF ITT CORPORATION, OR ITS SUBSIDIARY. THIS LEGEND SHALL BE MARKED ON ANY REPRODUCTION HEREOF, IN WHOLE OR IN PART. ALL RIGHTS TO THE INFORMATION AND DESIGN DISCLOSED HEREIN ARE RESERVED TO ITT CORPORATION, OR ITS SUBSIDIARY.	THIRD ANGLE PROJECTION	UNLESS OTHERWISE NOTED	DATE	BY	STANDARDS E-SERIES ZSBBS U-BENDS		
	CUSTOMER: -				INCH X: ± 0.06 XX: ± 0.06 XXX: ± 0.02 1/2: ± 1/16 1: ± 1/8 2: ± 1/4 3: ± 1/2 4: ± 3/8 5: ± 1/2 6: ± 3/4 8: ± 1 10: ± 1 1/4 12: ± 1 1/2 15: ± 1 3/4 20: ± 2 25: ± 2 1/2 30: ± 3 40: ± 4 50: ± 5 60: ± 6 80: ± 8 100: ± 10 120: ± 12 150: ± 15 200: ± 20 250: ± 25 300: ± 30 400: ± 40 500: ± 50 600: ± 60 800: ± 80 1000: ± 100 UNLESS OTHERWISE SPECIFIED, ALL DIMENSIONS ARE IN INCHES.	DWN 06/20/08 CHKD 06/20/08 APVD 06/20/08	MJM JRD JRD		WEIR 00.50 VERTICAL RUN x VERTICAL VALVE
P & ID	ISSUED BY: _____ CERTIFIED BY: _____				WT: -	ECN# 11862	MASTER DWG 009704		