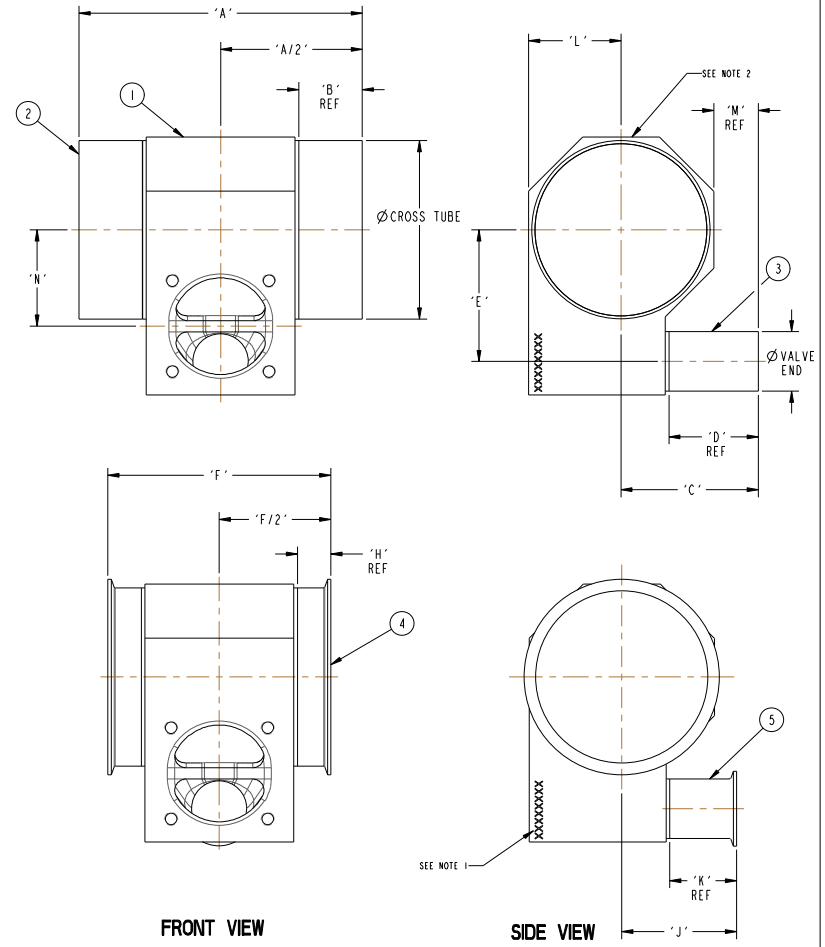


VALVE END	DIM'S	CROSS TUBE							
		0.50 [12,7]	0.75 [19,0]	1.00 [25,4]	1.50 [38,1]	2.00 [50,8]	2.50 [63,5]	3.00 [76,2]	4.00 [101,6]
0.50 [DN15]	"A"	5.25 [133,4]	5.25 [133,4]	5.25 [133,4]	5.25 [133,4]	5.75 [146,1]	5.75 [146,1]	5.75 [146,1]	6.25 [158,8]
	"B"	1.50 [38,1]	1.50 [38,1]	1.50 [38,1]	1.50 [38,1]	1.75 [44,5]	1.75 [44,5]	1.75 [44,5]	2.00 [50,8]
	"C"	1.93 [48,9]	2.00 [50,8]	2.13 [54,0]	2.38 [60,3]	2.63 [66,7]	2.88 [73,0]	3.13 [79,4]	3.63 [92,1]
	"D"	1.57 [40,0]	1.55 [39,4]	1.64 [41,5]	1.67 [42,4]	1.83 [46,4]	1.98 [50,4]	2.14 [54,3]	2.57 [65,3]
	"E"	0.74 [18,9]	0.88 [22,5]	1.02 [25,9]	1.28 [32,6]	1.54 [39,2]	1.80 [45,8]	2.06 [52,4]	2.58 [65,4]
	"F"	3.25 [82,6]	3.25 [82,6]	4.50 [114,3]	4.50 [114,3]	4.50 [114,3]	4.50 [114,3]	4.50 [114,3]	4.50 [114,3]
	"H"	0.50 [12,7]	0.50 [12,7]	1.13 [28,6]	1.13 [28,6]	1.13 [28,6]	1.13 [28,6]	1.13 [28,6]	1.13 [28,6]
	"J"	1.47 [37,4]	1.57 [40,0]	1.62 [41,0]	1.83 [46,5]	1.92 [48,8]	2.02 [51,2]	2.11 [53,6]	2.18 [55,4]
	"K"	1.13 [28,6]	1.13 [28,6]	1.13 [28,6]	1.13 [28,6]	1.13 [28,6]	1.13 [28,6]	1.13 [28,6]	1.13 [28,6]
	"L"	0.51 [13,0]	0.76 [19,3]	0.91 [23,2]	1.14 [28,9]	1.31 [33,2]	1.45 [36,9]	1.60 [40,5]	2.08 [52,8]
	"M"	1.50 [41,3]	1.50 [41,3]	1.50 [41,3]	1.50 [41,3]	1.50 [41,3]	1.50 [41,3]	1.50 [41,3]	1.50 [41,3]
"N"	0.34 [8,6]	0.48 [12,2]	0.61 [15,6]	0.88 [22,3]	1.14 [28,9]	1.40 [35,5]	1.66 [42,1]	2.17 [55,1]	
0.75 [DN20]	"A"		5.75 [146,0]	5.75 [146,0]	5.75 [146,0]	6.25 [158,8]	6.25 [158,8]	6.25 [158,8]	6.75 [171,4]
	"B"		1.50 [38,1]	1.50 [38,1]	1.50 [38,1]	1.75 [44,5]	1.75 [44,5]	1.75 [44,5]	2.00 [50,8]
	"C"		2.00 [50,8]	2.13 [54,0]	2.38 [60,3]	2.63 [66,7]	2.88 [73,0]	3.13 [79,4]	3.63 [92,1]
	"D"		1.55 [39,3]	1.57 [39,9]	1.67 [42,5]	1.77 [44,9]	1.93 [48,9]	2.08 [52,9]	2.38 [60,5]
	"E"		0.94 [23,9]	1.13 [28,6]	1.35 [34,3]	1.61 [40,9]	1.87 [47,5]	2.13 [54,1]	2.64 [67,0]
	"F"		3.75 [95,1]	5.00 [127,0]	5.00 [127,0]	5.00 [127,0]	5.00 [127,0]	5.00 [127,0]	5.00 [127,0]
	"H"		0.50 [12,7]	1.13 [28,6]	1.13 [28,6]	1.13 [28,6]	1.13 [28,6]	1.13 [28,6]	1.13 [28,6]
	"J"		1.58 [40,1]	1.68 [42,7]	1.83 [46,4]	1.98 [50,3]	2.07 [52,7]	2.17 [55,1]	2.37 [60,2]
	"K"		1.13 [28,6]	1.13 [28,6]	1.13 [28,6]	1.13 [28,6]	1.13 [28,6]	1.13 [28,6]	1.13 [28,6]
	"L"		0.69 [17,5]	0.89 [22,6]	1.16 [29,4]	1.36 [34,5]	1.52 [38,6]	1.66 [42,2]	2.08 [52,8]
	"M"		1.50 [41,3]	1.50 [41,3]	1.50 [41,3]	1.50 [41,3]	1.50 [41,3]	1.50 [41,3]	1.50 [41,3]
"N"		0.47 [12,0]	0.61 [15,5]	0.88 [22,2]	1.14 [28,9]	1.40 [35,5]	1.66 [42,1]	2.17 [55,0]	
1.00 [DN25]	"A"			6.14 [156,0]	6.14 [156,0]	6.64 [168,7]	6.64 [168,7]	6.64 [168,7]	7.14 [181,4]
	"B"			1.50 [38,1]	1.50 [38,1]	1.75 [44,5]	1.75 [44,5]	1.75 [44,5]	2.00 [50,8]
	"C"			2.13 [54,0]	2.38 [60,3]	2.63 [66,7]	2.88 [73,0]	3.13 [79,4]	3.63 [92,1]
	"D"			1.58 [40,1]	1.75 [44,3]	1.84 [46,8]	1.88 [47,7]	2.03 [51,6]	2.31 [58,6]
	"E"			1.28 [32,4]	1.54 [39,2]	1.81 [46,0]	2.07 [52,6]	2.33 [59,2]	2.83 [71,9]
	"F"			5.38 [136,7]	5.38 [136,7]	5.38 [136,7]	5.38 [136,7]	5.38 [136,7]	5.38 [136,7]
	"H"			1.13 [28,6]	1.13 [28,6]	1.13 [28,6]	1.13 [28,6]	1.13 [28,6]	1.13 [28,6]
	"J"			1.67 [42,4]	1.76 [44,6]	1.91 [48,4]	2.12 [53,9]	2.22 [56,3]	2.43 [61,6]
	"K"			1.13 [28,6]	1.13 [28,6]	1.13 [28,6]	1.13 [28,6]	1.13 [28,6]	1.13 [28,6]
	"L"			0.94 [23,9]	1.25 [31,7]	1.47 [37,3]	1.65 [41,9]	1.81 [45,9]	2.08 [52,8]
	"M"			1.50 [41,3]	1.50 [41,3]	1.50 [41,3]	1.50 [41,3]	1.50 [41,3]	1.50 [41,3]
"N"			0.63 [16,0]	0.90 [22,8]	1.16 [29,5]	1.42 [36,1]	1.68 [42,8]	2.18 [55,4]	
1.50 [DN40]	"A"				7.25 [184,2]	7.75 [196,8]	7.75 [196,8]	7.75 [196,8]	8.25 [209,6]
	"B"				1.50 [38,1]	1.75 [44,5]	1.75 [44,5]	1.75 [44,5]	2.00 [50,8]
	"C"				2.38 [60,3]	2.63 [66,7]	2.88 [73,0]	3.13 [79,4]	3.63 [92,1]
	"D"				1.82 [46,1]	1.92 [48,7]	2.08 [52,9]	2.12 [53,7]	2.41 [61,3]
	"E"				1.87 [47,4]	2.13 [54,2]	2.40 [61,0]	2.66 [67,6]	3.17 [80,4]
	"F"				6.50 [165,1]	6.50 [165,1]	6.50 [165,1]	6.50 [165,1]	6.50 [165,1]
	"H"				1.13 [28,6]	1.13 [28,6]	1.13 [25,6]	1.13 [28,6]	1.13 [28,6]
	"J"				1.68 [42,8]	1.83 [46,5]	1.92 [48,7]	2.14 [54,2]	2.34 [59,4]
	"K"				1.13 [28,6]	1.13 [28,6]	1.13 [28,6]	1.13 [28,6]	1.13 [28,6]
	"L"				1.25 [31,8]	1.57 [39,8]	1.81 [45,9]	2.01 [51,1]	2.34 [59,3]
	"M"				1.50 [41,3]	1.50 [41,3]	1.50 [41,3]	1.50 [41,3]	1.50 [41,3]
"N"				0.93 [23,6]	1.20 [30,4]	1.46 [37,2]	1.73 [43,8]	2.23 [56,6]	
2.00 [DN60]	"A"					8.75 [222,3]	8.75 [222,3]	8.75 [222,3]	9.25 [235,0]
	"B"					1.75 [44,5]	1.75 [44,5]	1.75 [44,5]	2.00 [50,8]
	"C"					2.63 [66,7]	2.88 [73,0]	3.13 [79,4]	3.63 [92,1]
	"D"					1.79 [45,4]	1.95 [49,6]	2.12 [53,7]	2.41 [61,3]
	"E"					2.38 [60,4]	2.65 [67,2]	2.91 [74,0]	3.42 [86,8]
	"F"					7.50 [190,5]	7.50 [190,5]	7.50 [190,5]	7.50 [190,5]
	"H"					1.13 [28,6]	1.13 [28,6]	1.13 [28,6]	1.13 [28,6]
	"J"					1.96 [49,9]	2.05 [52,0]	2.14 [54,3]	2.34 [59,4]
	"K"					1.13 [28,6]	1.13 [28,6]	1.13 [28,6]	1.13 [28,6]
	"L"					1.60 [40,7]	1.90 [48,2]	2.14 [54,4]	2.52 [64,0]
	"M"					1.50 [41,3]	1.50 [41,3]	1.50 [41,3]	1.50 [41,3]
"N"					1.19 [30,2]	1.46 [37,1]	1.72 [43,8]	2.23 [56,7]	

LIST OF MAJOR COMPONENTS			
ITEM	DESCRIPTION	MATERIAL	QTY
1	BODY-ZBOB		1
2	TUBING-CROSS TUBE END		AR
3	TUBING-VALVE END		AR
4	FERRULE-CROSS TUBE END TC		1
5	FERRULE-VALVE END TC		1



IT1 REF  
 0.50: M1165  
 0.75: M1166  
 1.00: M1167  
 1.50: M1168  
 2.00: M1169

NOTE: (UNLESS OTHERWISE SPECIFIED)  
 1. VALVE BODY HEAT NUMBER.  
 2. LOCATION FOR PRODUCT MARKING.

P1 P2 P3

PURE-FLO ORDER: \_\_\_\_\_ ITEM: \_\_\_\_\_

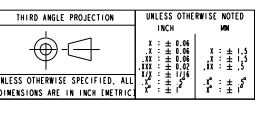
CUSTOMER: \_\_\_\_\_

CUSTOMER PO: \_\_\_\_\_

OTHER INFO: \_\_\_\_\_

ISSUED BY: \_\_\_\_\_ CERTIFIED BY: \_\_\_\_\_

THIS DOCUMENT IS THE SOLE PROPERTY OF ITT INDUSTRIES, INC., OR ITS SUBSIDIARY, AND IS PROVIDED SUBJECT TO RETURN. IT IS ISSUED IN STRICT CONFIDENCE AND SHALL NOT BE REPRODUCED, OR COPIED, OR DISCLOSED IN WHOLE OR IN PART, OR USED AS THE BASIS FOR THE MANUFACTURE OR SALES OF APPARATUS OR PARTS TO WHICH THE DOCUMENT RELATES, WITHOUT THE EXPRESS WRITTEN CONSENT OF ITT INDUSTRIES, INC., OR ITS SUBSIDIARY. THIS LEGEND SHALL BE MARKED ON ANY REPRODUCTION HEREOF, IN WHOLE OR IN PART. ALL RIGHTS TO THE INFORMATION AND DESIGN DISCLOSED HEREIN ARE RESERVED TO ITT INDUSTRIES, INC., OR ITS SUBSIDIARY.



UNLESS OTHERWISE NOTED		DATE		BY		STANDARDS - ZSBBT WITH	
INCH	MILLIMETER	DWN	CHKD	PAS	APVD	WT.	ECN#
1:1 = 1:1	1:1 = 1:1	12-09-05	01-18-06	PAS	PAS	-	10278
2:1 = 1:2	2:1 = 1:2						
3:1 = 1:3	3:1 = 1:3						
4:1 = 1:4	4:1 = 1:4						
5:1 = 1:5	5:1 = 1:5						
6:1 = 1:6	6:1 = 1:6						
8:1 = 1:8	8:1 = 1:8						
10:1 = 1:10	10:1 = 1:10						
12:1 = 1:12	12:1 = 1:12						
15:1 = 1:15	15:1 = 1:15						
20:1 = 1:20	20:1 = 1:20						
25:1 = 1:25	25:1 = 1:25						
30:1 = 1:30	30:1 = 1:30						
40:1 = 1:40	40:1 = 1:40						
50:1 = 1:50	50:1 = 1:50						
60:1 = 1:60	60:1 = 1:60						
75:1 = 1:75	75:1 = 1:75						
100:1 = 1:100	100:1 = 1:100						

IT1 Industries  
 Pure-Flo Solutions Group  
 www.ittpureflo.com

SITE: CA D A10075 REV: 1  
 SHEET 1 OF 1

CD\_PFD\_08/25/04